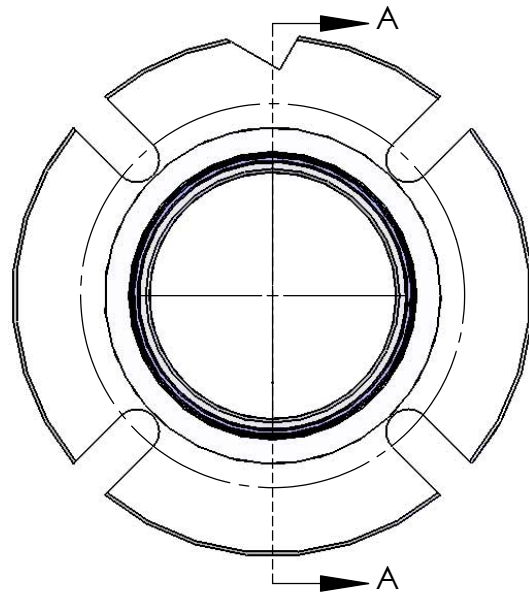


ITEM NO.	MATERIAL	DESCRIPTION	ZN4500/QTY.
1	SiC/316L	ZA4500 ROT. ASSEMBLY	1
2	CBN/H.T. CBN/TUNG-CAR/SiC/316L	ZA4500 STAT. ASSEMBLY	1
3	316L	GLAND-FLUSH	1
4	BRASS	CLIP	4
5	AFLAS/KALREZ/EPR/SILICONE/VITON	STATIONARY O-RING	1
6	AFLAS/KALREZ/EPR/SILICONE/VITON	SHAFTO-RING	1
7	AFLAS/KALREZ/EPR/SILICONE/VITON	FACE MOUNT O-RING	2
8	316SS/H-276	1/4-28X0.50 Socket Set Screw Cup Point	4 - 8
9	17-7PH/H-276	WAVE SPRING	1
10	GYLON 3410	GLAND GASKET	1



PERFORMANCE

VELOCITY-FPM	T.I. RUNOUT	⊥ TOLERANCE
UP TO 400	.250	.125
UP TO 800	.125	.062
UP TO 1200	.050	.025
UP TO 3000	.025	.015

MAXIMUM PRESSURE - 400 PSI
 MAXIMUM VELOCITY - 3500 FPM
 CONSULT FACTORY FOR EXTREME APPLICATIONS

DIMENSIONS ARE IN INCHES UNLESS OTHERWISE SHOWN
 TWO PLACE DECIMAL ±.01
 THREE PLACE DECIMAL ±.005
 BREAK ALL CORNERS .010
 FACES CONCENTRIC & PARALLEL ±.002

MATERIAL
SiC/316L

FINISH

DO NOT SCALE DRAWING

PROPRIETARY AND CONFIDENTIAL
 THE INFORMATION CONTAINED IN THIS DRAWING IS THE SOLE PROPERTY OF ZMT, INC. ANY REPRODUCTION IN PART OR AS A WHOLE WITHOUT THE WRITTEN PERMISSION OF ZMT, INC. IS PROHIBITED.

	NAME	DATE
DRAWN	RE	1/6/2008
CHECKED		
ENG APPR.		
MFG APPR.		
Q.A.		

DESCRIPTION:
**ZN CARTRIDGE SEAL
 FLUSH GLAND**

ZM Technologies

ZM Technologies

SIZE **A** DWG. NO. **ZN MATERIALS** REV.

SCALE:1:4 WEIGHT: SHEET OF